

Next edition:

03rd April 2020

Publication Cut off Date:

01st April 2020

5PM

Cost: \$1.00

In between the Gnow

In The Gnow - Update

Volume 1 Issue 19— March 2020

The Gnowangerup CRC Opening Hours

Monday to Friday 9am to 5pm

E: roundup@gnowangerupcrc.com.au

P: 9827 1635

F: 9827 1636



To prevent COVID-19 it is
safest to avoid physical
contact when greeting.
Safe greetings include a
wave, a nod, or a bow.

How should I greet
another person to avoid
catching the new
coronavirus?



#Coronavirus #COVID19

9 March 2020



Subscription Rates

Per Year-

Collected \$48.00

Posted \$98.00

Emailed \$48.00

Advertising Rates—Yearly

<u>B/W</u>	<u>Colour</u>
1/8 Page	\$85.00
	\$170.00

Single Insertion

	<u>B/W</u>	<u>Colour</u>
1/8 Page	\$8.50	\$17.00
1/4 Page	\$18.50	\$37.00
1/2 Page	\$32.70	\$65.40
Full Page	\$60.50	\$121.00

Classifieds

\$0.75 per line minimum of \$5.00.

All for sale items under \$50 and community notices can be advertised for free in B/W

IMPORTANT NOTICE

Due to the Corona-Virus (COVID-19) the following events for the Gnowangerup CRC has been postponed till further notice.

29th April—Mothers Day
Brunch

15th May—Cancer Council
Dinner

28th May—Biggest Morning
Tea

Thank you everyone for your
patience

Disclaimer

The views expressed in articles in this newsletter are not necessarily the views of the editors or other volunteers who work to produce this newsletter. The editor has the right to withhold, edit or abbreviate items as considered necessary. No responsibility is accepted for any statement of opinion, any error or omissions. All suggestions and feedback are greatly appreciated.



The Gnowangerup CRC is a Not-for-profit community organisation that is able to provide Services to the Gnowangerup & surrounding communities by way of funding received by The Department of Primary Industries & Regional Development.

The funding is limited and does not cover all of the costs for providing these vital services, so we here at the CRC are trying to come up with ways to receive additional financial support to continue providing these

Terms & Conditions for Yearly Subscription and Advertising

Subscription and advertising rates are based upon 1st July 2019 to 30th June 2020 – fiscal year

Subscription and advertising requested before the end of December 2019 will be charged at the full yearly rate

Subscription and advertising requested after 1st January 2020 will be at a 50% discount of the normal yearly rate

Yearly advertising rates are clearly displayed on the initial application, any errors made on the customers part will be the responsibility of the customer. Any errors made on the CRC's part will be the responsibility of the CRC

If a mistake is detected in the advertisement, it is the responsibility of the customer to notify the CRC within 14 days of publication of the advertisement

No refunds, partial or otherwise, after processing of initial application

GNOWANGERUP HUB COMMUNITY GARDEN

**Do you have an interest in gardening?
Do you have knowledge you would like to
share?**

**Do you need a veggie garden to grow your
own?**

Do you just like to garden?

**Then we are interested in seeing you at the
Gnowangerup Hub Community Garden**

**We would love to see all keen gardeners, young or
old.**

**Located behind the CRC, entrance from
Whitehead Road**

**Meeting room is the old Pavilion building at the
back of the Baptist Church hall.**

**From the 7th of March the Garden will be
open on the
1st and 3rd Saturday of the month. 8.30
am till 10.30 am.**

**Come along and find out what we are all about.
For further information and membership forms
please contact the Gnowangerup CRC**



MEDIA RELEASE

DATE: 17 March 2020

Albany and Esperance

TITLE: Wellstead Farmer Announced as South Coast 2020 Soil Health Champion

Wellstead farmer Richard Davy has been announced as the 2020 South Coast Soil Health Champion.

Richard was awarded the title of 2020 South Coast Soil Health Champion at the recent Talkin Soil Health Conference in York because of his long-term commitment to improving soil health.

“For us it was about choosing a Soil Health Champion who is an inspiration to those around them. A champion embodies the principals of sustainable agriculture and has a strong drive to improve the health of their soils. They are the farmers of today who will influence our farmers of tomorrow. Richard definitely meets the criteria with the work he’s been doing” said Mr David Broadhurst, Land and Water Program Manager with South Coast NRM.

Farming for more than 20 years, Richard manages a 5000-acre organic certified cattle operation in Wellstead. His farming focus has been on quality food production without degrading his farming system and soil resources. Richard makes his own biological fertiliser to replace synthetic fertilisers and build up his soil biology.

He has also been very generous with his learnings, hosting workshops annually to showcase his efforts to other farmers both locally and from around the world. Richard freely shares what he knows and highlights his failures and successes equally.

“Richard was an obvious choice as our Soil Health Champion. He has demonstrated his long-term commitment to improving his soils through a range of methods. All whilst remaining profitable.” Said Mr Broadhurst. “Added to this, Richard is very committed to sharing his knowledge and skills with other farmers”.

END



South Coast Natural Resource Management Inc. is the leading independent natural resource management organisation for the Region and is locally based and locally managed. We work with local communities and government to protect our natural environment and build a healthy productive Region. Our focus is on ensuring the Region continues to benefit from clean water, unpolluted air, healthy soil and marine environments, ecologically diverse landscapes and maintains its cultural heritage. We are proud to be part of a national network of 56 partner organisations and one of the 7 WA regional NRM groups. www.southcoastnrm.com.au

Attachment: Image: XXXXXXXX

Contact details:

Name: Justin Bellanger, CEO Organisation: South Coast NRM Email: ceo@southcoastnrm.com.au Mobile/Tel: 08 9845 8537



The 2020 Blessing of the Roads campaign is encouraging everyone to work together towards a future of zero road deaths and serious injuries.

If your Local Government or organisation has made the decision not to proceed with scheduled Blessing of the Roads community events, there are a number of other ways to participate in the campaign and promote road safety in the lead up to the Easter long weekend.

WALGA's RoadWise has developed a new promotional tool for the Blessing of the Roads campaign which allows Local Governments (and others) to acknowledge local road safety efforts and contributions outside the community event setting.

A photo overlay is available to download from the 'Tools and Resources' section of the RoadWise website at <https://.roadwise.asn.au/onlineform/>.

The photo overlay can be used on images of local emergency service personnel, photos from 2019 Blessing of the Roads events, or photos of other road safety initiatives and then posted on social media, in newsletters and on websites to acknowledge those who work to make our roads safer.

The Blessing of the Road Resource Kit includes communication templates which can assist members of the community road safety network to share road safety information in the lead up to the Easter long weekend in a variety of alternate ways.

For more information about the campaign and how you can get involved, visit the RoadWise website; <https://roadwise.asn.au/blessing-of-the-roads.aspx>.





REGIONAL COLUMN

www.dmirs.wa.gov.au | www.v

With Senior Regional Officer for Great Southern, Steph Marsh

Is your top loader recalled?

Recalled Samsung top loader washing machines remain in Australian homes, creating a serious fire hazard that puts lives at risk.

We want anyone who has a Samsung top loader to check the model number on the back of the machine above the barcode, and make sure it's not a recalled machine listed at

www.samsung.com/au/washingmachinerecall.

The recalled models, including SW75V9WIP; SW65V9WIP; SW70SPWIP; SW80SPWIP; WA85GWGIP and WA85GWWIP, were manufactured between 2010 and 2013. You may have bought one brand new from the shops 7-10 years ago or second-hand any time in the last decade.

14,483 units were sold in Western Australia and in a progress report released late January 2020, Samsung reported 11,247 units in WA were resolved – meaning they've been reworked, exchanged or the consumer has had a refund. That leaves 3,236 outstanding, although we think a number will have been dumped at the tip due to age of the machines.

Affected units have an internal fault where condensation can penetrate an electrical connector causing deterioration which may in turn cause a fire – most recently this happened in Armadale in October 2019 but thankfully no-one was injured. In that instance the consumer was entitled to recover damages from Samsung for consequential loss or damage, suffered as a result of the faulty product.

It's really important for anyone who finds out they have a recalled washing machine to disconnect it from the power supply immediately, not use it again and contact Samsung on **1800 239 655** for a refund and removal of the machine.

As this is regarded as a major fault, repair is not an option. Affected consumers will get their money back and the supplier should dispose of the dangerous machine.

Recalled machines should not be re-sold, given away for free or placed on the verge for bulk rubbish collection because the aim is to remove any possibility of them being used by people who may not realise that they are dangerous.

Consumers who have any problems securing a refund or having the machine collected should contact

Gnowangerup CRC—New Events

Play in the park

2020

Regional Locations Support

ALL WELCOME

Family

Play in the park

10am–12noon

FREE!

Outdoor Play Time

Story/Rhyme/Craft/Fruit

Support your child's development through play

2020	Denmark 1st Wednesday	Kendenu 2nd Wednesday	Gnowangerup 3rd Wednesday	Grainbrook 4th Wednesday
February	5	12	19	26
March	4	11	18	25
April	1	8	Holidays	27
May	6	13	20	27
June	3	10	17	24

f playintheparkg

For more details contact: Jamie.sealy@mcawa.org.au

Gnowangerup CRC

GNOWANGERUP FAMILY HUB

AFTER SCHOOL PROGRAM

3:15PM -4:15PM

EVERY WEDNESDAY

DURING SCHOOL TERMS ONLY

****All School children must be accompanied by an adult for safety reasons. If any children come alone they will not be allowed to participate.

**Gnowangerup Family Hub has been funded under the Families and Communities Programme by the Australian Government Department of Social Services. Go to www.dss.gov.au for more information.

PLEASE CONTACT US ON 089827 1635 TO SECURE YOUR CHILDS PLACE

Help Protect our Emergency Services Volunteers

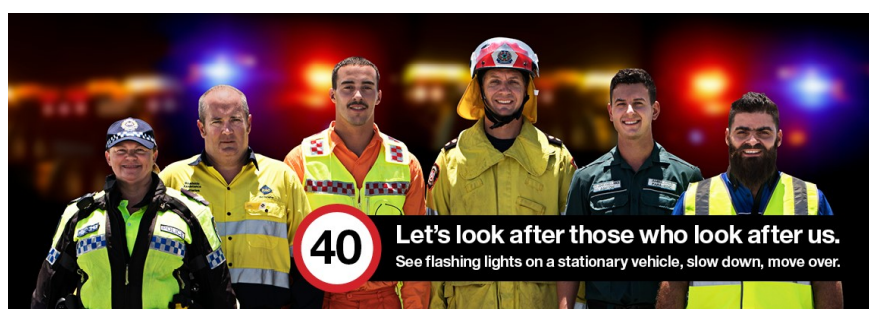
With a number of wildfires, summer storms and car accidents the start to 2020 has been extremely busy for all of our emergency services volunteers and unfortunately there has also been a number of reports of where these important community members have been put at risk by speeding cars pass them as they go about their work on the road side.

The Community have a role in keeping our Emergency Services volunteers and staff safe while they are responding to incidents on our roads. This is why State Government introduced the Slow Down M& Move Over (SLOMO) law in 2018 to improve the road safety of people attending roadside emergencies in Western Australia.

The law requires motorists to reduce speed to a maximum of 40km/h when passing incident response vehicles with flashing lights and, where possible and safe to do so, move to the next lane.

Moving forward to help educate the community about what they can do to help keep our Emergency Services safe RoadWise will be encouraging Local Governments and community groups throughout the region to distribute information about the laws via their social media and newsletters.

More information about the reasons for the SLOMO laws and what is required on motorists can be found on the Road Safety Commissions website <https://www.rsc.wa.gov.au/Rules-Penalties/Browse/Emergency-Vehicles>





Government of **Western Australia**
Department of **Mines, Industry Regulation and Safety**



Media Statement

Consumer Protection 140 William Street Perth Western Australia 6000

Email: cpmedia@dmirs.wa.gov.au

www.dmirs.wa.gov.au www.wa.gov.au

5 March 2020

Scammers exploit payment loophole on PayPal

Concert-goers are being warned to avoid paying for tickets via PayPal using the 'friends and family' function, as these transactions are not covered by the financial service's buyer protection policy.

The warning comes as Consumer Protection has received numerous complaints from Western Australians unable to retrieve their money after using this function to transfer funds to scammers posing as genuine ticket sellers on classified sites.

Most PayPal transactions are covered by a buyer protection policy, whereby consumers are entitled to receive refunds if goods are not received or differ greatly to the item's description.

However, payments made through the 'friends and family' function do not charge the seller any fees and are ineligible for this protection, meaning the funds cannot be retrieved if a problem occurs. Instead consumers should always ensure they use the 'goods and services' PayPal payment option when buying from people they don't know as this is covered by buyer protections.

Commissioner for Consumer Protection Lanie Chopping said people should be careful when buying tickets to sold-out events and only choose a method that is buyer-protected.

"Tickets are often purchased only days ahead of an event taking place and scammers are telling consumers the payment will occur faster if they go through this function, which is untrue" Ms Chopping said.

"We have long been advocates for payments to be made through PayPal as it has protections in place, however consumers need to be aware that there are some exceptions to this policy.

"The PayPal 'friends and family' feature is designed for using with people that you trust, so if someone you don't know is selling you something and requests or demands that you use the 'friends and family' feature, do not purchase the item. The only truly safe way to get a ticket to an event is to buy direct from the authorised primary seller, as you may encounter further difficulties if you buy from ticket re-sellers on classified sites."

FUNDING APPLICATION EOI

NSPNR Invites EOIs For

Pallinup Revegetation & Carbon Offset

Do you have the Pallinup River or any tributaries running through your property?

Are you interested in both native revegetation and carbon offset compensation payments?

Get in contact with NSPNR now for inclusion in an upcoming project application!

**Minimum of 30ha required per property*

EOI DUE: April 6, 2020 | 5 PM

**Email: freya@nspnr.com.au
Call: 0437 248 206**



Co-insides with “Art in the Porongurup”

Easter



Time for a new Machinery Shed or Garage?

Albany Sheds & Garages can design and build anything from small Sheds and Garages, to large rural Machinery or Hay sheds.

Call now to request a competitive quote.

Joel: 0427 895 039 | joel@albanyshedsгарages.com.au

Custom makes.
Kit + Erection.
Kit Sales only.





Media statement

www.dlgsc.wa.gov.au
@DLGSCsport

5 March 2020

Nominate your hard-working sports administrators for the Mike Stidwell Medal

If you know a sports volunteer in the Great Southern who's doing great work and deserves recognition, why not nominate them for the Mike Stidwell Medal?

The annual award recognises outstanding contribution to sport administration and is run by the Department of Local Government, Sport and Cultural Industries (DLGSC).

It honours the memory of former Department of Sport and Recreation regional manager Mike Stidwell and his contributions to sport and recreation in the region from 1979-2000.

DLGSC's Great Southern Regional Manager, Chris Thompson, says the award is open to all volunteers, young or old.

"This award is an opportunity to recognise the fact that volunteers are the lifeblood of communities in the Great Southern. Without our dedicated volunteers, sport and recreation events couldn't be run," he said.

"We owe them so much, and this is an opportunity to shine the spotlight on their efforts."

To be eligible, you must live in the Great Southern region or have done so within the past two years. Nominees must predominantly have been involved in a sport and recreation club or group in a volunteer administrative role.

You can apply online at <https://www.dlgsc.wa.gov.au/department/regions/great-southern/mike-stidwell-medal>

Nominations close by COB on **30 April 2020**, with the winner announced on 18 May 2020 at the start of National Volunteer Week (18 – 24 May 2020) at the Volunteer Recognition Sundowner to be held at Centennial Stadium in Albany.

For further information:

Mel Eastough

Department of Local Government, Sport and Cultural Industries

22 Collie Street, Albany

Ph.9892 0100 or greatsouthern@dlgsc.wa.gov.au

Media enquiries (not for publication):

Chris Thompson – Great Southern Regional Manager

Department of Local Government, Sport and Cultural Industries 9892 0156 / 0417 932 296 / chris.thompson@dlgsc.wa.gov.au

DAVIS

BULLDOZING & EARTHMOVING



- ◊ Dams
- ◊ Enlargements
- ◊ Gravel Stockpiling
- ◊ Flat Catchments
- ◊ Rock & Stump Removal
- ◊ Excavator

Contact John: **0428 271 144**

PH: 9827 1144

FAX: 9827 1344

PO Box 257 Gnowangerup WA 6335

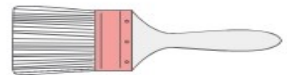
Email: johndavisbulldozing@gmail.com



YOU ARE INVITED TO OUR



Crafted Yarn



FROM 10AM - 1ST AND 3RD FRIDAY OF THE MONTH - AT THE GNOWANGERUP
CRC

Come and join our Craft and yarn days
Bring along your craft projects and we will supply the coffee!

TRANSPORT



SPREADING

- LIME & GYPSUM SPREADING
- SNAIL & MOUSE BAITING
- BULK HAULAGE & OVERSIZE
- 3M CENTRES
- VRT COMPATABLE
- 10-12M CTF

For a **compatible quote** or package deals, please call **John** on **0418 696 590**
or email christiane@sclaustralia.com.au



www.sclaustralia.com.au



Coronavirus (COVID-19)

Frequently asked questions

There is an ongoing investigation to understand more about the Coronavirus (COVID-19). As this is a rapidly evolving investigation, for the latest information visit: <https://healthywa.wa.gov.au/coronavirus>

General information about COVID-19

What are coronaviruses?

Coronaviruses are a large family of viruses that can cause illness in humans and animals. Human coronavirus illnesses are generally mild such as the common cold. However, some coronaviruses can cause severe diseases such as Severe Acute Respiratory Syndrome (SARS), which was identified in 2002, and Middle East Respiratory Syndrome (MERS), which was identified in 2012.

What is the 2019 Coronavirus (COVID-19)?

This is a new coronavirus that was first identified in Wuhan, Hubei Province, China in December 2019. It is a new strain of coronaviruses that hasn't previously been identified in humans. COVID-19 is closely related to SARS and in the same family of viruses as MERS.

What are the symptoms of COVID-19?

Symptoms include shortness of breath or cough, with or without a fever. In some cases, the virus can cause severe pneumonia. From what we know now about COVID-19, the symptoms can start between 2 and 14 days from exposure to the virus.

Should I be tested if I don't have symptoms?

No. There is no reason to be tested for COVID-19 if you do not have symptoms.

Why won't I get tested if I don't have symptoms?

In the early stages of infection (before people have symptoms), it may not be possible to detect the virus. Testing when you do not have symptoms could give a false negative result.

How do I get medical clearance for work?

It is not possible to obtain a "medical clearance" for COVID-19 unless you are a confirmed case of COVID-19. In the early stages of infection (before people have symptoms), it may not be possible to detect the virus. Testing when you do not have symptoms could give a false negative result.

Can COVID-19 be transmitted from person to person?

Yes, COVID-19 can be spread from person to person. The virus is most likely to spread from person-to-person through:

- direct close contact with a person while they are infectious
- close contact with a person with a confirmed infection who coughs or sneezes, or
- touching objects or surfaces (such as door handles or tables) contaminated from a cough or sneeze from a person with a confirmed infection, and then touching your mouth or face.

Most infections are only transmitted by people when they have symptoms. Spread of this virus from person to person is usually between close contacts. The definition of 'close contacts' includes those people who have been face to face with a person infected with the virus for at least 15 minutes or been in the same closed space for at least 2 hours with an infected person.

What should I do if I have symptoms?

If you are a close contact of a confirmed case of COVID-19 **OR** have travelled overseas in the past 14 days **AND** have respiratory symptoms such as shortness of breath or cough, with or without a fever:

In the metropolitan area, you can visit a COVID-19 Clinic for assessment. For locations please see our website.

In a regional area, please call your GP and advise them of your symptoms and travel history. They will be able to advise you on where to go to be assessed.

If you are experiencing a life-threatening emergency dial 000.

Treatment

What is the treatment for COVID-19?

There is no specific treatment for COVID-19 and, in most cases, symptoms will resolve on their own.

Is there a vaccine?

There are no available vaccines for COVID-19 at this time.

Are health workers at risk?

Health workers are recommended to apply infection prevention and control measures while seeing patients. The risk to health workers remains low.

How is COVID-19 diagnosed?

The current testing available for COVID-19 includes obtaining nose and throat swabs. These are then sent to the laboratory for testing.

What if I don't have Medicare cover?

Most travellers to WA will have travel insurance. To support the WA Health response to COVID-19, the Minister for Health has confirmed that those people who are not eligible for Medicare **AND** who present to WA Health facilities for assessment in relation to COVID-19 infection, will not be charged out of pocket expenses.

Self-Quarantine

What should I do if I come into contact with a person with confirmed COVID-19 infection?

Your Public Health Unit will contact you if you are a close contact of someone who has been confirmed to have COVID-19. You will be asked to stay isolated for 14 days since you last had contact with the infected person, and to report any symptoms to the Public Health Unit.

If you develop respiratory illness symptoms while in self-quarantine you will need to contact your local Public Health Unit for advice. Let them know you are in self-quarantine due to suspected COVID-19 infection.

Australian Government fact sheets are available:

- Information for a suspected case
- Information about home isolation for those who are well
- Information about home isolation for those who are unwell

Are some people at higher risk than others?

Some people may be at higher risk of infection, such as people who have other illnesses that suppress the immune system or make them more vulnerable to respiratory disease. This includes people with lung disease or diabetes, those who have suppressed immune systems, and the elderly.

What does self-quarantine mean for me?

If you are required to self-quarantine, it means you must stay in your home, hotel room, or other accommodation even if you are perfectly well with no symptoms. The only time you should leave your home/accommodation is to seek medical attention. When you are in self-quarantine you cannot attend public places such as work, school, shopping centres or go on holidays.

If you are a confirmed case of COVID-19, you must also follow appropriate infection control measures such as:

- wearing a surgical mask (if you have one) or keeping a distance of more than 1.5 metre or arm's length from others when you are in the same room with them (irrespective of whether they are also in isolation or not),
- covering your mouth and nose when you sneeze or cough,
- washing hands often and thoroughly for at least 20 seconds, and
- ensuring you do not share household items with other people in your home.

Do I need to self-quarantine?

People need to self-quarantine in the following circumstances:

- If you have been in close contact with a confirmed case of COVID-19, you must quarantine yourself for 14 days after the date of last contact with the confirmed case.
- If you have left, or transited through, mainland China or Iran in the last 14 days, you must quarantine yourself for 14 days from the date of leaving mainland China or Iran.
- If you have left, or transited through, the Republic of Korea on or after 5 March, you must quarantine yourself until 14 days after leaving the Republic of Korea.
- If you have left, or transited through, Italy on or after 11 March, you must quarantine yourself until 14 days after leaving Italy.
- NEW** - If you have arrived in Australia on or after 9.00pm (AWST) 15 March, you must self-

quarantine for a period of 14 days.

If you are suspected of having COVID-19, you must isolate yourself until you have test results and have been advised you no longer need to isolate.

How can I protect myself and my family?

The best way to protect yourself and others is to practise good hygiene by:

- frequently washing your hands for at least 20 seconds with soap and water, or using an alcohol-based hand gel
- covering your cough or sneeze with a tissue or flexed elbow
- avoiding close contact with anyone who has a cold or flu-like symptoms.

Should I wear a face mask?

WA Health does not recommend the use of facemasks for the general public to prevent the risk of contracting COVID-19. There are further details in the Australian Government fact sheet Information on the use of surgical masks

I am caring for someone who has (or could have) COVID-19, how can I protect myself?

Anyone in the home with a respiratory illness should be cared for in a single room, where practicable. Isolating sick residents in single rooms reduces the risk of transmission to others.

Follow the below steps to reduce chances of spreading infections at home:

- frequently washing your hands for at least 20 seconds with soap and water, or using an alcohol-based hand gel
- covering your cough or sneeze with a tissue or flexed elbow
- avoiding close contact with anyone who has a cold or flu-like symptoms.

If it is not possible to keep the potentially infected person in a room by themselves, try to follow these principles to reduce chances of disease spread:

- as a priority, place people with excessive cough and phlegm in single rooms
- if there is more than one person with the same symptoms, they can be placed together in the same room
- importantly, ensure that people sharing a room are physically separated (more than 1 metre or arm's length) from each other.

This information is summarised in the 'Home isolation guidance when unwell' fact sheet:

Can employees return to work if their family members are in self-quarantine?

The employee can go to work. However, if the family member becomes symptomatic and requires testing during the 14 days of self-quarantine, then the employee may need to self-quarantine until the results of the family member's COVID-19 test is known.

If the family member's test result is positive for COVID-19 the employee will be contacted by their Public Health Unit if they need to self-quarantine.

More information is in the 'Information for employers' fact sheet:

Travel

What should I do if I have been to mainland China, Iran, South Korea or Italy or any other country?

Travellers from mainland China, Iran, the Republic of Korea and Italy may need to self-quarantine. Please see the advice under “Self-Quarantine” above to determine if this applies to your travel situation.

NEW - If you have arrived in Australia on or after 9.00pm (AWST) 15 March, you must self-quarantine for a period of 14 days.

More information can be found on the Home Isolation fact sheet and at www.health.gov.au/covid19-travellers.

I have a holiday or work trip planned, what should I do?

The current advice (at 16 March 2020) to all Australians (regardless of age, health or destination) is to **reconsider any non-essential overseas travel at this time**. For up to date information please go to the Australian Government’s Smartraveller website.

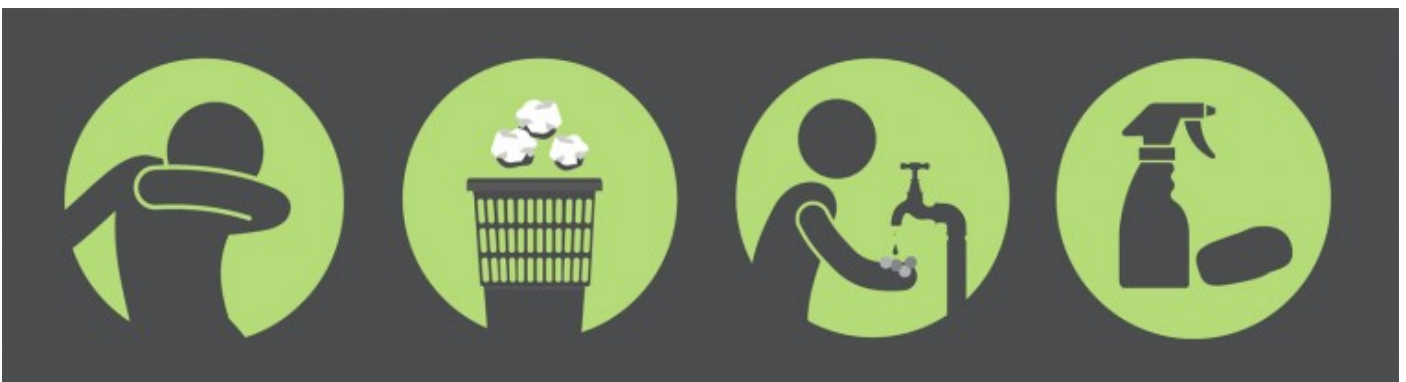
Other information

Should I avoid contact with pets or other animals if I am sick?

There is no current evidence that pets are at risk from a potentially infected case. Until more is known about COVID-19, avoid contact with pets if you have been to China or Iran in the past 14 days and get sick. While you are sick, wear a facemask if you must care for or be around pets or other animals.

Is it safe to be around cruise ships that dock in WA ports?

The commonwealth and state governments along with the Cruise Line Industry Association, have put in place a series of extra border measures, including health screening and isolation measures, to minimise the risk to Western Australians.





Since 1920...
and we are still here for you

Our Packages make it easier

Non Attend Cremation

\$3995

Large Chapel Cremation

\$5950

No hidden fees includes GST

www.albanyfunerals.com.au

9842 3443

All Hours

MUFFLER REBEL
EXHAUST & SUSPENSION



TUFF STUFF
THE SPRAYED-ON UTE LINER



Rhino Linings
PREMIUM PROTECTION

*Trucks & all vehicles

*Exhaust Repairs & Performance upgrades

*Suspension Upgrades (Authorised GVM installers)

*Specialise in Custom made Exhausts

*Towbars/ Snorkels/ Bullbars & more

*Quality products to suit your budget & needs

PH: 98418200 46 Sanford Rd Albany



**June 21st - 24th
2020**

EXPRESSIONS OF INTEREST

2020 YOUNG FARMERS TOUR

The NSPNR Young Farmers Tour is back!!!

Are you 18 to 35 years old and involved in the Agriculture Industry?

Keen to tour around the Great Southern to learn about new Livestock technologies?

\$250 per person (incl. Accommodation, most meals and entry fees.

Register your interest ASAP - limited spaces will fill up!

CONTACT NSPNR TO REGISTER

dimitry@nspnr.com.au
Dimitry 0448 233 985

Protect others from getting sick

When coughing and sneezing
cover mouth and nose with
flexed elbow or tissue



**Throw tissue into closed bin
immediately after use**

Clean hands with alcohol-based
hand rub or soap and water
after coughing or sneezing and
when caring for the sick



Order Next Seasons Fertilizer Early



Fertilizer Supply Offer now open

- Order by the end of October 2019
- Receive a \$2/tonne rebate on Summit Technical Services, including soil and plant analysis
- Fixed and variable price contracts available

Get in touch with Andrew Wallace, your local Area Manager to learn more

Mobile: 0427 083 820

Email: awallace@summitfertz.com.au



- GPS GUIDANCE SYSTEM
- VARIABLE RATES
- MAPPING AND LOADCELLS
- 3 x TRUCKS
- 1 x TERROGATOR
- 2 x LOADERS

Lime · Gypsum · Sulphate · Super · Potash · Urea



For all your spreading needs
please contact us on:

Cliff and Mandy Harris

0428 271 142

Cody Harris

0428 676 206

mandyharris512@hotmail.com · Cliff.harris125@gmail.com

Business Directory

GNOWANGERUP IGA



OPENING HOURS:

Monday-Friday: 8:00am - 6:00pm

Saturday: 8:30am - 12 noon

Phone: 9827 1109 Fax: 9827 1428

Supporting Your Local Community

IF WE HAVEN'T GOT IT, WE CAN GET IT FOR YOU!

BARFEEDS STOCK PELLETS



Located 12kms west of Gnowangerup on main Broomehill- Gnowangerup Rd

Lick Feeder pellets as well as 9mm pellets suitable for trail feeding

Complete Nutritional Balance

Suitable for stud rams, feedlot sheep and lambing ewes

Orders and Enquiries

Terry: 0488 258 134

Richard House: 0428 271 565

Office: 9827 1565 E-mail: barloostud@bigpond.com



Mulesing Contractor

Book in early

Gnowangerup & Surrounds

Toby - 0455 600 070

"For New Residential and Commercial Construction, extensions and renovations"

RM SMITH & SONS, THE RURAL BUILDERS

Randall Smith

Builders Reg. #13705

Mobile: 0403 332 220

PO Box 140, GNOWANGERUP, WA, 6335

P: 0403 332 220

E: r.smith@rmsmithandsons.com.au

Whether you need a new home, a new roof or even a new bathroom, We are able to build your dream



G&S Professionals
My work is my Pride.



21T Excavator with operator.

- Prices starting from \$100/hour
- Dam Cleaning / Fixing
- Rock heap removals
- Tree removals
- Trenches, holes and more.

Available from 15 September 2019. Book now to get your spot during summer.

Call Gary Jansen 0438 289 000

MACHINERY HIRE - STUMP REMOVAL - RAKING



CAT D6 With Rake



40T Excavator



Stump Plucker



Land Clearing Rake



CAT Challenger

ENQUIRE ONLINE NOW AT WWW.RAPTORGROUP.COM.AU OR CALL 9847 4747 TO DISCUSS YOUR REQUIREMENTS

Business Directory



WESTCOAST
WOOL & LIVESTOCK

Proudly WA Owned & Operated

Take the Westcoast advantage

- Wool buying
- On-farm oddments
- Experienced in livestock services
- Auction sale
- Prompt payment

Reuben Small 0429 441 022
reuben@wcw.com.au

Danny Burkett 0418 848 314
d.burkett@wcw.com.au

Anglican Community Church of Gnowangerup Vintage & Pre-Loved Op Shop

Anglican Community Church Hall
Open Tuesday & Thursday

10am-12 noon

Pre-Loved & Vintage:

*Clothing, Jewellery, Hats, Shoes,
Homewares & Furniture*

ALL DONATIONS WARMLY RECEIVED AND ALL PROCEEDS GO INTO THE COMMUNITY

Jan: 0427 710 376

Jill: 0427 770 767



AUSPAN

**WA's LEADER IN THE DESIGN & CONSTRUCTION
OF STEEL FRAME SHEDS AND BUILDINGS**





SHEDS | **CALL NOW**
1300 271 220

- ▶ Workshops
- ▶ Hay sheds
- ▶ Council approval
- ▶ Multipurpose grain shed packages
- ▶ Concrete Floors / walls
- ▶ Kit Sheds

☎ 1300 271 220
🌐 www.auspangroup.com.au



B.P HARRIS & SON



"You Name It, We Make It—You Break It, We Fix It"



54 Quinn Street, Gnowangerup WA 6335

(08) 9827 1076

www.bpharrisandson.com.au



- WELDING
- ENGINEERING
- FABRICATION
- BEARINGS
- PULLEYS
- STEEL SUPPLIES

Business Directory



28-32 Whitehead Road
Gnowangerup, WA, 6335

Phone: (08) 9827 1355

Fax: (08) 9827 1405

Principals:

Zach Walsh - 0447 109 848

Tom McInerney - 0429 876 016

Sales:

Jack Scanlan - 0408 277 959

Sales & Accounts:

Sheridan Kowald - 0455 581 729

Agronomist:

Tom McInerney - 0429 876 016

Livestock & Real Estate:

Kim Adams - 0447 830 948

Finance:

Mike Moore - 0429 099 179
Alysha Turner - 0437 501 520

COFFEE WITH AN ARCHITECT

Accredited Architectural Design for Regional Western Australia
www.regionalarchitect.com.au

CALL US FOR A CHAT 9699 6474

ORA
Office of Regional
Architecture

New Houses, Adds & Alts
Retail, Café, Office
Heritage
Community
Planning Applications

ABA+
Member
Australia
Institute
Architect
ABWA #2150

Country Ag AgChem Solutions for WA Farmers

Country Ag, Ag Chemical Specialist are pleased to welcome Jacqui Wood to their agency group.

JACQUI WOOD YOUR PARTNER IN CROP PROTECTION NEEDS

Country Ag's comprehensive range of products are manufactured in Western Australia and are now available from Jacqui Wood's Agency.

WE ARE HERE TO SUPPORT YOU, THE LOCAL FARMER

- ☒ High loading active ingredients
- ☒ Reduced packaging
- ☒ Better pricing and terms
- ☒ Innovation through Research & Development with a Certified Chemical Laboratory
- ☒ Western Australian owned with a community focus



Contact us for more information: 0427428033 or jacqui.wood00@bigpond.com

New Range

PARA-TROOPER



CALL TODAY FOR A QUOTE

Improve Your Productivity

Reliable Lubrication Equipment

Minimum downtime • Maximum worktime

1300 767 705

17 Formby Street GNOWANGERUP

E: sales@armadillogroup.com.au

armadillogroup.com.au

ARMADILLO
Group

Eye Testing

Optometrist Matt Rebeiro

the **spectaclehut**

Need Glasses or Contact Lenses?

Want Quality AND Value for Money?

***Eye Tests Bulk Billed To Medicare ***

Diabetic Screening Available

Buy One Pair Get One Pair Free

Huge Range Of Frames Available

*Free standard single vision pair with full price pair

WA Owned

Mobile Clinic For All
Your Eye Care Needs!

Book Early To Avoid
Disappointment!

Eye Testing Clinic at
Gnowangerup CRC

The same service you get at an
optometrist in the city, brought
to you

For Appointments:

Sherika: 0467617153

This mobile optometry service is funded by the Australian Government Department of Health and administered by Local Health West

Nomad Industries Towing and Tilt Tray Services



Beven Jaensch

Licensed RAC Contractor

24 Hour Service, 7 Days a Week

Mobile- 0427271141

Office- 98271270

nomad57@m2data.com.au

PINNACLE PRODUCTS

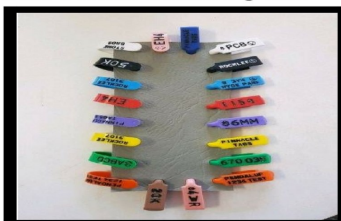
PH: (08) 9827 3516

Mob: 0448 932 678

sales@pinnacleproducts.net.au

www.pinnacleproducts.net.au

Have you ordered your EAR TAGS yet?



Very quick turnaround! (Often same day)

Your local supplier of quality printed sheep tags

Based & printed in Gnowangerup

TREE LOPPING & PRUNING NO JOB TOO SMALL

TREE SERVICING

Southern Region W.A.

Albany, Borden, Broomehill, Cranbrook, Dumbleyung, Gnowangerup, Katanning, Kojonup, Kukerin, Lake Grace, Nyabing, Ongerup, Pingrup, Tambellup, Wagin, Woodanilling.

Email: sales@neatcare.com.au

www.neatcaretreeservices.com.au



Neatcare
0409 782 628

[f neatcaretreeservices](https://www.facebook.com/neatcaretreeservices)

Crossword

Edited by Will Shortz

PUZZLE BY TIM CROCE

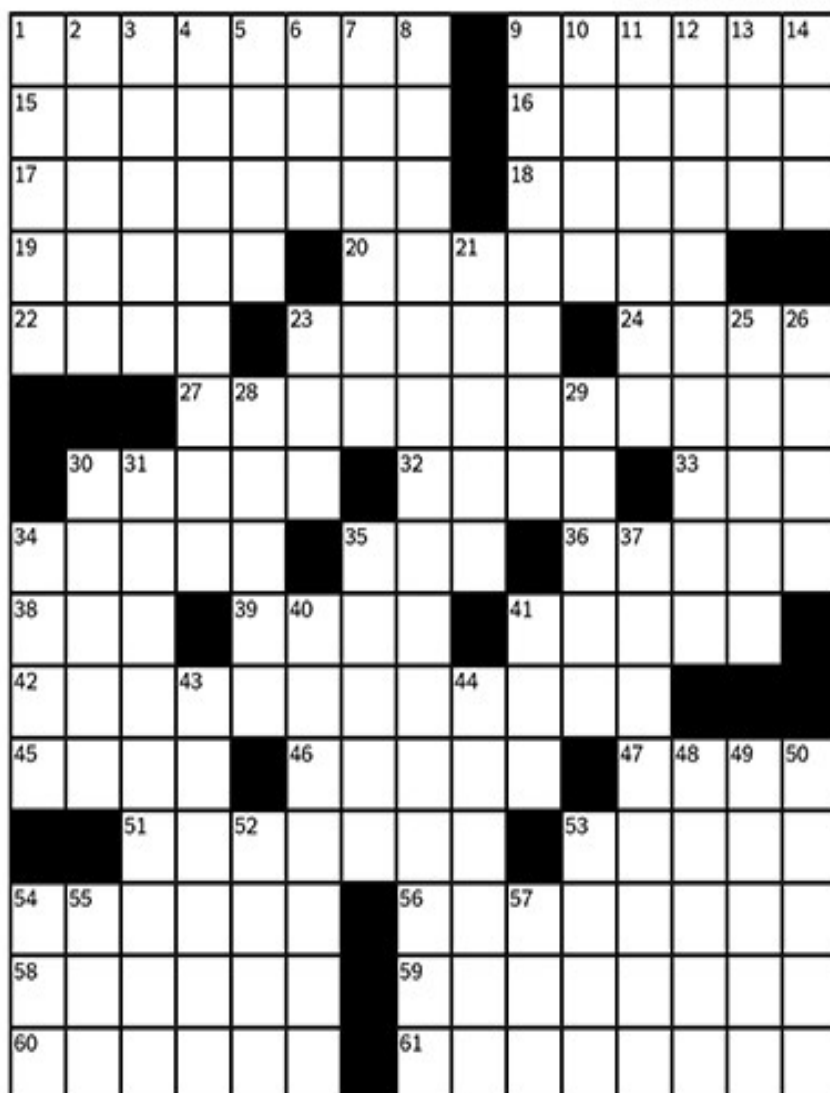
ACROSS

- 1 [If you get what I mean ...]
 9 Person in upper sales?
 15 All together
 16 Title bandit in a Verdi work
 17 "Ixnay"
 18 See 19-Across
 19 Took an 18-Across
 20 Long-____
 22 Wife of Angel Clare, in literature
 23 All together
 24 Lundi ____
 27 100% reliable
 30 Like the Three Stooges
 32 Stream past Memphis
 33 Through
 34 Worthy of being tossed
 35 Shooting spot
 36 Smart one?
 38 N.C.A.A.'s Conference ____
 39 Provider of some light fare
 41 1,000 liters
 42 1980s gangster sobriquet
 45 "Oh, O.K."
 46 Kind of pressure
 47 Not be off
 51 Kind of pressure
 53 "Fingers crossed"

- 54 Ibsen title heroine
 56 Danish ancestor
 58 Yanks are part of it
 59 Woody Allen film subjects
 60 Be taken for
 61 Complement from the chef?

DOWN

- 1 It's often tape-measured
 2 Agave fiber
 3 Edges
 4 Hiker's purchase
 5 Stopped working
 6 Texter's P.O.V. preceder
 7 Where Tara Lipinski upset Michelle Kwan
 8 Has the material mastered
 9 One with an important point?
 10 Form of "sum"
 11 Insect pupa sold as turtle food
 12 Jeep alternative
 13 Disney doe
 14 Reason to do patchwork?
 21 What a dodger might face
 23 1982 Donald Fagen hit subtitled "What a Beautiful World"



Copyright © 2012 The New York Times. Reprinted with permission.

Puzzle No. 0707

- 25 She asked "What IS an un-birthday present?"
 26 Home to Ellsworth A.F.B.
 28 Means of audio-visual connection
 29 N.Z. was a member of it
 30 Chinese martial arts, collectively
 31 Many gastrointestinal tract residents
 34 Extrudes
 35 Floor exercise maneuver
 37 Preventer of photographic glare
 40 In some way
 41 1960s org. revived in 2006
 43 Newtons per ampere-meter
 44 Scientific research centers?
 48 Leotards cover them
 49 Areas for some kneelers
 50 "Oh, for goodness' sake!"
 52 Neighbor of Apache Junction
 53 Apropos of
 54 Orthodontist's concern
 55 Copying
 57 One not going out with a bang?

Mar 2020

Sun	Mon	Tue	Wed	Thu	Fri	Sat
1	2	3	4	5	6 Crafted Yarns	7
8	9	10 Opshop 10am— 12pm	11 Parenting workshop 10:30am Gnowangerup Family Hub 3:00pm	12 Opshop 10—12pm MYGov 2pm-4pm	13 National Ride 2 school day	14
15	16	17 Opshop 10—12pm	18 Gnowangerup Family Hub 3:00pm	19 Opshop 10—12pm	20 Crafted Yarns	21
22	23	24 Opshop 10—12pm	25 Gnowangerup Family Hub 3:00pm	26 Opshop 10—12pm	27	28
29	30	31 Opshop 10—12pm				

Upcoming events 2020

- Crafted Yarns