

Next edition:

20th March 2020

Publication Cut off Date:

18th March 2020

Cost: \$3.00

# In The Gnow

Edition 17

March 2020

Issue 32

The Gnowangerup CRC Opening Hours

Monday to Friday 9am to 5pm

E: roundup@gnowangerupcrc.com.au

P: 98271 635

F: 98271 636



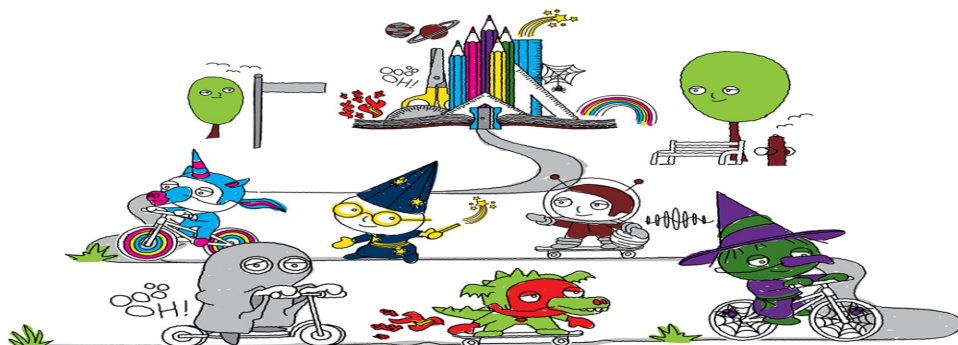
*Freaky*  
Friday 13 March 2020

## NATIONAL RIDE2SCHOOL DAY

### Ride 2 School Day

More than 350,000 students across the nation will be riding, walking, scooting and skating to and from school next Friday as part of National Ride 2 School Day so drivers are encouraged to be extra vigilant on the roads, slow down to 40km/hr when approaching school zones.

Also remember **when the speed limit is 60km/h or under, motorists must leave a gap of at least 1m between their vehicle and bicycle riders when passing. When the speed limit is over 60km/h, the gap must be at least 1.5m.**





# Gnowangerup Community Resource Centre

## Subscription Rates

Per Year-

Collected \$48.00

Posted \$98.00

Emailed \$48.00

## Advertising Rates—Yearly

	<u>B/W</u>	<u>Colour</u>
1/8 Page	\$85.00	\$170.00

## Single Insertion

	<u>B/W</u>	<u>Colour</u>
1/8 Page	\$8.50	\$17.00
1/4 Page	\$18.50	\$37.00
1/2 Page	\$32.70	\$65.40
Full Page	\$60.50	\$121.00

## Classifieds

**\$0.75 per line minimum of \$5.00.**

**All for sale items under \$50 and community notices can be advertised for free in B/W**



Get help with your repairs from our skilled volunteers for Bikes, Sewing, Household Items, Sharpening of tools, Electronic's & Electrical (AC adapter & battery items only)

**Second Saturday of the Month**  
10am - 12noon  
Scots Church Hall  
168 York Street  
(on your left as you go down the hill)

Pop in for a free cuppa

Repair Café is a global community project to inspire repair and reuse

Repair Café ~ Albany  
repaircafe.albany@gmail.com



**accessability**  
| connect • belong • achieve

### **Disability Support Workers Wanted**

We are looking for enthusiastic and dedicated individuals/people in Gnowangerup and surrounding areas.

The successful applicants will be part of a dynamic and caring team that has a strong focus on quality support for people with disability and promoting community inclusion.

You will be assisting people with disability to access the community, accomplish practical tasks of daily living and achieve personal goals.

Interested applicants must have a driver's licence and own transport. A "can-do" attitude and an ability to make a positive contribution by working creatively is essential.

If you enjoy working with people to make a positive difference please contact Heather Waters, Support Coordinator, for further information on 0434 623 371.





The Gnowangerup CRC is a Not-for-profit community organisation that is able to provide Services to the Gnowangerup & surrounding communities by way of funding received by The Department of Primary Industries & Regional Development.

The funding is limited and does not cover all of the costs for providing these vital services, so we here at the CRC are trying to come up with ways to receive additional financial support to continue providing these

## **Terms & Conditions for Yearly Subscription and Advertising**

Subscription and advertising rates are based upon 1<sup>st</sup> July 2019 to 30<sup>th</sup> June 2020 – fiscal year

Subscription and advertising requested before the end of December 2019 will be charged at the full yearly rate

Subscription and advertising requested after 1<sup>st</sup> January 2020 will be at a 50% discount of the normal yearly rate

Yearly advertising rates are clearly displayed on the initial application, any errors made on the customers part will be the responsibility of the customer. Any errors made on the CRC's part will be the responsibility of the CRC

If a mistake is detected in the advertisement, it is the responsibility of the customer to notify the CRC within 14 days of publication of the advertisement

No refunds, partial or otherwise, after processing of initial application

Subscription and advertising renewals will be due by 30<sup>th</sup> May 2020

In Between The Gnow is published as black & white only





# Professional Maintenance

## OUR SERVICES

- Installation
- Building Maintenance
- Repairs
- Repaints
- Garden Maintenance
- Drywall
- Gutter Cleaning
- Carpentry
- Tiling
- and more...

## WHY CHOOSE US

- ✓ 30 years Experience
- ✓ Affordable Pricing
- ✓ Safe Work Practices
- ✓ Quality Workmanship



**CALL 0497000470**  
FREE ESTIMATES

Allwest Services  
124 Daping Street, Katanning, WA 6713  
phil@allwestservices.com.au



- GPS GUIDANCE SYSTEM
- VARIABLE RATES
- MAPPING AND LOADCELLS
- 3 x TRUCKS
- 1 x TERROGATOR
- 2 x LOADERS

**Lime • Gypsum • Sulphate • Super • Potash • Urea**



For all your spreading needs  
please contact us on:

Cliff and Mandy Harris

0428 271 142

Cody Harris

0428 676 206

mandyharris512@hotmail.com • Cliff.harris125@gmail.com





## **Two Plant Operator/General Hand positions**

The Shire of Gnowangerup is looking for two self-motivated people to take on the role of Plant Operator/General Hand in the road construction crew.

The successful applicants will work under the direction of the Manager of Works/Construction Leading Hand; will be experienced in the road construction industry and able to operate general road construction plants. Experience in grader operations while not essential will be highly regarded. A minimum HC truck licence is required and an MC licence or the ability to obtain will be highly regarded.

The position is full time (84 hours per fortnight) and offered at level 4 of the Local Government Industry Award 2010 with above award wages. It also falls under the Shire of Gnowangerup (2016 Operational Works Crew) Enterprise Agreement.

Applicants must be willing to undertake a preplacement medical and hold a legal right to work in Australia.

A Position Description can be obtained by contacting Michelle Dilkes on 9827 1338 or via email at [michelle.dilkes@gnowangerup.wa.gov.au](mailto:michelle.dilkes@gnowangerup.wa.gov.au)

Applicants are encouraged to contact Manager of Works, Yvette Wheatcroft, on 0439 791 925 for further information about the position.

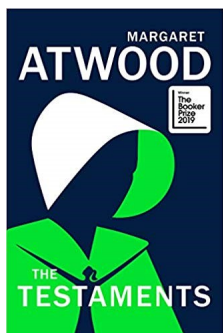
Applications should consist of a covering letter, CV and statement of not more than 5 pages addressing the selection criteria. All applications are to be marked Private and Confidential and addressed to the Chief Executive Officer.

All applications must be received via email to [michelle.dilkes@gnowangerup.wa.gov.au](mailto:michelle.dilkes@gnowangerup.wa.gov.au) or via post at the Shire of Gnowangerup, 28 Yougenup Road, Gnowangerup WA 6335, by 4.00pm on **Tuesday 10<sup>th</sup> March 2020**.

Bob Jarvis

**CHIEF EXECUTIVE OFFICER**

# MARCH LIBRARY NEWS



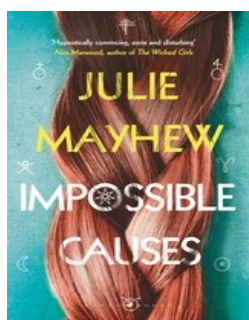
Margaret Atwood's dystopian masterpiece, *The Handmaid's Tale*, is a modern classic. Now she brings the iconic story to a dramatic conclusion in this riveting sequel. More than 15 years after the events of *The Handmaid's Tale*, the theocratic regime of the Republic of Gilead maintains its grip on power, but there are signs it is beginning to rot from within. At this crucial moment, the lives of three radically different women converge, with potentially explosive results. Two have grown up as part of the first generation to come of age in the new order. The testimonies of these two young women are joined by a third voice: a woman who wields power through the ruthless accumulation and deployment of secrets. As Atwood unfolds *The Testaments*, she opens up the innermost workings of Gilead as each woman is forced to come to terms with who she is, and how far she will go for what she

## *the* NICKEL BOYS



## The Nickel Boys—Colson Whitehead

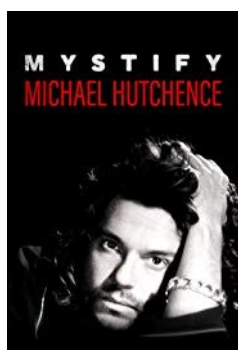
As the Civil Rights movement begins to reach the black enclave of Frenchtown in segregated Tallahassee, Elwood Curtis takes the words of Dr. Martin Luther King to heart: He is "as good as anyone." Abandoned by his parents, but kept on



## Impossible Causes—Julie Mayhew

'A claustrophobic tale of outsiders versus insiders, religious fervour versus age-old paganism and, ultimately, women and men. A tightly told and powerful story of sins, lies and secrets long held'

## NEW DVD



## Mystify—Michael Hutchence

A look at the troubled heart and soul of Michael Hutchence, lead singer and songwriter of INXS. Deftly woven from an archive of rich imagery, Michael's private home movies and those of his lovers, friends, and family.



Check out our [Facebook page](#) for all the latest news and updates.





## GNP CRC Upcoming Events



Gnowangerup CRC

# GNOWANGERUP FAMILY HUB

## AFTER SCHOOL PROGRAM

3:15PM -4:15PM

EVERY WEDNESDAY  
DURING SCHOOL TERMS ONLY



\*\*\*\*All School children must be accompanied by an adult for safety reasons. If any children come alone they will not be allowed to participate.

\*\*Gnowangerup Family Hub has been funded under the Families and Communities Programme by the Australian Government Department of Social Services. Go to [www.dss.gov.au](http://www.dss.gov.au) for more information.

PLEASE CONTACT US ON 089827 1635 TO SECURE YOUR  
CHILDS PLACE

## MUFFLER REBEL EXHAUST & SUSPENSION



**TUFF STUFF**  
THE SPRAYED-ON UTE LINER



**Rhino Linings**  
PREMIUM PROTECTION

\*Trucks & all vehicles

\*Exhaust Repairs & Performance upgrades

\*Suspension Upgrades (Authorised GVM installers)

\*Specialise in Custom made Exhausts

\*Towbars/ Snorkels/ Bullbars & more

\*Quality products to suit your budget & needs

PH: 98418200 46 Sanford Rd Albany

**DISTRICT FOUR  
CBH GROWER DIRECTOR**

**SHANE**

**Carruthers**

**VOTE 1**

*It's time  
for change*

- Operations Knowledge • Grower Focused
- Leadership & Management • Accountability

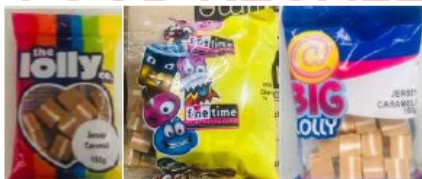
**Shane Carruthers**

MOBILE: 0408 396 432

EMAIL: [shaneandlynette@bigpond.com](mailto:shaneandlynette@bigpond.com)



## FOOD RECALL



Lolly Co Jersey Caramel 150g, Big Lolly Jersey Caramel 160g, Fine Time Jersey Caramel 1Kg  
Best Before Nov 2020

CTC Australia is conducting a recall of the above products. The products have been available for sale at IGA's and independent stores in NSW, ACT, QLD, VIC, TAS, SA and WA (Lolly Co), NSW, ACT, VIC (Big Lolly), and NSW, QLD, WA, VIC (Fine Time).

**Problem:** The recall is due to the presence of foreign matter (plastic).

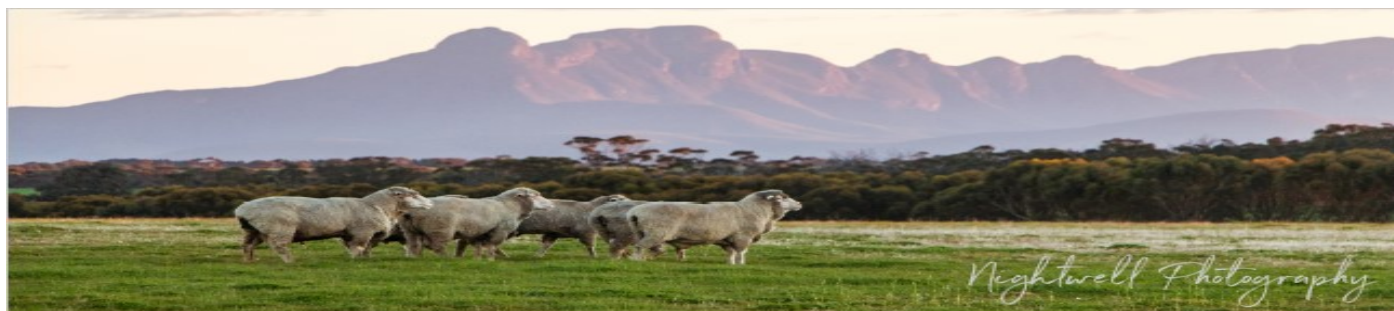
**Food safety hazard:** Food products containing plastic may cause injury if consumed.

**What to do:** Consumers should not eat this product and should return the products to the place of purchase for a full refund. For further information please contact:

CTC Australia

+612 9743 8631 [www.ctcaustralia.com](http://www.ctcaustralia.com)

See [www.foodstandards.gov.au/recalls](http://www.foodstandards.gov.au/recalls)  
for Australian food recall information



# LAMB-TECH BORDEN

THE BENEFITS OF INCORPORATING ELECTRONIC IDENTIFICATION (EID) TAGGING  
AND OTHER TECHNOLOGY INTO YOUR SHEEP FLOCK

**BORDEN PAVILION**  
STONE STREET, BORDEN

**THURSDAY 12 MARCH 2020**  
10AM

**DAY TICKET \$25**

Includes speakers, morning/arvo tea, lunch, butcher demo

**STAY FOR DINNER \$75**

Includes above + 2 course meal (main & dessert). Cash bar

[www.trybooking.com/598072](http://www.trybooking.com/598072)



## SPEAKERS

**David Beatty**

Group Manager, Productivity & Animal Wellbeing - Meat & Livestock Australia

**Caris Jones**

Project Manager, Genetics - Meat & Livestock Australia

**Rafael Ramirez**

The Meat Specialist

**Stacey Bell**

Management Consultant - Farmanco

**Rod Bushell**

Manager - Katanning Saleyards

**Kelly Gorter**

Owner - KG Livestock Services

**Rob Davidson**

Production Manager - WAMMO

Local producers

**+ TRADE STALLS**

**RSVPS BY FRIDAY 6 MARCH**  
**FOR MORE INFORMATION EMAIL**  
[admin@bordenpavilion.com.au](mailto:admin@bordenpavilion.com.au)

Following Lamb-Tech you are invited to attend a fun and informal

## BUTCHER & COOKING DEMONSTRATION at 4.30pm

with leading Perth meat specialist Rafael Ramirez. Grab a drink, gather round and get some home butcher and cooking tips - plus some tasters!

Then sit down and enjoy a

## LAMB-BASED FEAST from 6pm

catered by Janelle Nehme from Gypsy Kitchen Co.

**Tickets \$50**

butcher demo, tasters, two-course meal

Cash bar

[www.trybooking.com/598072](http://www.trybooking.com/598072)

RSVPS ESSENTIAL BY FRIDAY 6 MARCH

For more info email [admin@bordenpavilion.com.au](mailto:admin@bordenpavilion.com.au)







## What you need to know

If you are a traveller from mainland China or Iran, or think you may have been in close contact with a confirmed case of coronavirus, special restrictions apply to you. You must isolate yourself, which means you stay at home and do not attend public places, including work, school, childcare or university. For the latest advice on who needs to isolate, go to [www.health.gov.au](http://www.health.gov.au)

While coronavirus is of concern, it is important to remember that most people displaying symptoms such as fever, cough, sore throat or tiredness are likely suffering with a cold or other respiratory illness—not coronavirus.

## What is a coronavirus and COVID-19?

Coronaviruses can make humans and animals sick. Some coronaviruses can cause illness similar to the common cold and others can cause more serious diseases, including Severe Acute Respiratory Syndrome (SARS) and Middle East respiratory syndrome (MERS). This new coronavirus originated in Hubei Province, China and the disease outbreak is named COVID-19.

## How is this coronavirus spread?

The coronavirus is most likely to spread from person-to-person through:

- direct close contact with a person while they are infectious
- close contact with a person with a confirmed infection who coughs or sneezes, or
- touching objects or surfaces (such as door handles or tables) contaminated from a cough or sneeze from a person with a confirmed infection, and then touching your mouth or face.

Most infections are only transmitted by people when they have symptoms. These can include fever, a cough, sore throat, tiredness and shortness of breath.

## How can we help prevent the spread of coronavirus?

Practising good hand and sneeze/cough hygiene is the best defence against most viruses. You should:

- wash your hands frequently with soap and water, before and after eating, and after going to the toilet
- cover your cough and sneeze, dispose of tissues, and use alcohol-based hand sanitiser
- and if unwell, avoid contact with others (touching, kissing, hugging, and other intimate contact).

## Who needs to isolate?

To help limit the spread of coronavirus, you must isolate yourself in the following circumstances:

- If you have left, or transited through, mainland China in the last 14 days you must isolate yourself for 14 days from the date of leaving mainland China.
- If you have left, or transited through Iran on or after 1 March, you must isolate yourself until 14 days after leaving Iran.
- If you have been in close contact with a confirmed case of coronavirus, you must isolate yourself for 14 days from the date of last contact with the confirmed case.

## What does isolate in your home mean?

People who must isolate need to stay at home and must not attend public places, in particular work, school, childcare or university. Only people who usually live in the household should be in the home.

Do not allow visitors into the home. Where possible, get others such as friends or family who are not required to be isolated to get food or other necessities for you. If you must leave the home, such as to seek medical care, wear a mask if you have one. For more information visit <https://www.health.gov.au/resources/collections/novel-coronavirus-2019-ncov-resources>

## What do I do if I develop symptoms?

If you develop symptoms (fever, a cough, sore throat, tiredness or shortness of breath) within 14 days of leaving mainland China or Iran, or within 14 days of last contact of a confirmed case, you should arrange to see your doctor for urgent assessment.

You should telephone the health clinic or hospital before you arrive and tell them your travel history or that you may have been in contact with a potential case of coronavirus. You must remain isolated either in your home or a healthcare setting until public health authorities inform you it is safe for you to return to your usual activities.

## Who is most at risk of a serious illness?

Some people who are infected may not get sick at all, some will get mild symptoms from which they will recover easily, and others may become very ill, very quickly. From previous experience with other coronaviruses, the people at most risk of serious infection are:

- people with compromised immune systems, such as people with cancer
- elderly people
- Aboriginal and Torres Strait Islander people
- very young children and babies, and
- people with diagnosed chronic medical conditions.

## How is the virus treated?

There is no specific treatment for coronaviruses. Antibiotics are not effective against viruses. Most of the symptoms can be treated with supportive medical care.

## Should I wear a face mask?

You do not need to wear a mask if you are healthy. While the use of masks can help to prevent transmission of disease from infected patients to others, masks are not currently recommended for use by healthy members of the public for the prevention of infections like coronavirus.

## More information

For the latest advice, information and resources, go to [www.health.gov.au](http://www.health.gov.au)

Call the National Coronavirus Health Information Line on 1800 020 080. It operates 24 hours a day, seven days a week. If you require translating or interpreting services, call 131 450.

The phone number of your state or territory public health agency is available at [www.health.gov.au/state-territory-contacts](http://www.health.gov.au/state-territory-contacts)

If you have concerns about your health, speak to your doctor.





## **Media Release: Great Southern schools participating in forum.**

The Albany Chamber of Commerce and Industry is pleased with the huge response from the region's schools in regards to their upcoming Women's Leadership Forum on March 12<sup>th</sup> and 13<sup>th</sup>.

"It is inspiring to see how many schools are investing in their students, the future women leaders in the region," Says ACCI CEO, Benita Cattalini, "Sending these students sends such a strong message to them that they are worthy of being considered a leader; that their school believes in them."

So far, Great Southern Grammar, St Joseph's College, North Albany Senior High School, Mt Barker Senior High School, Denmark SHS, Mt Barker Community College have confirmed that they'll be sending representatives.

"The youth are our future and they are proving themselves to be strong leaders." Says Benita.

The Women's Leadership Forum is for all women in the Great Southern Region who are wanting to develop their leadership skills and connect with other like-minded women in the community.

The Women's Leadership Forum runs for 2 days, held in both Albany and Denmark, and features a large range of local, national and international speakers and workshop facilitators. One prominent speaker will be Kemi Nekvapil, who has been a guest speaker for Richard Branson as well as received training from Dr Brene Brown. Kemi Nekvapil will be speaking about how women can empower themselves by asking for what they need and want.

For media enquiries, please contact:  
Sarah Furtner- Marketing & Engagement Coordinator.

Phone: 08 9845 7888

Email: [marketing@albanycci.com.au](mailto:marketing@albanycci.com.au)



## Media statement

[www.dlgsc.wa.gov.au](http://www.dlgsc.wa.gov.au)  
@DLGSCsport

If you know a sports volunteer in the Great Southern who's doing great work and deserves recognition, why not nominate them for the Mike Stidwell Medal?

The annual award recognises outstanding contribution to sport administration and is run by the Department of Local Government, Sport and Cultural Industries (DLGSC).

It honours the memory of former Department of Sport and Recreation regional manager Mike Stidwell and his contributions to sport and recreation in the region from 1979-2000.

DLGSC's Great Southern Regional Manager, Chris Thompson, says the award is open to all volunteers, young or old.

"This award is an opportunity to recognise the fact that volunteers are the lifeblood of communities in the Great Southern. Without our dedicated volunteers, sport and recreation events couldn't be run," he said.

"We owe them so much, and this is an opportunity to shine the spotlight on their efforts."

To be eligible, you must live in the Great Southern region or have done so within the past two years. Nominees must predominantly have been involved in a sport and recreation club or group in a volunteer administrative role.

You can apply online at <https://www.dlgsc.wa.gov.au/department/regions/great-southern/mike-stidwell-medal>

Nominations close by COB on 30 April 2020, with the winner announced on 18 May 2020 at the start of National Volunteer Week (18 – 24 May 2020) at the Volunteer Recognition Sundowner to be held at Centennial Stadium in Albany.

### **For further information:**

Mel Eastough  
Department of Local Government, Sport and Cultural Industries  
22 Collie Street, Albany  
Ph.9892 0100 or [greatsouthern@dlgsc.wa.gov.au](mailto:greatsouthern@dlgsc.wa.gov.au)



# MANYPEAKS LIME

## We Are Open with High Quality Lime Available

WALCO, Western Agricultural Lime Co Australia wishes to advise that we have High Quality Chalk Lime available now for delivery.

WALCO have had a proud relationship with the area for many years, having operated the Manypeaks pit since the late 1980's and the Windy Harbour quarry since 1976.

Manypeaks produces a very fine Chalk Lime which when compared to other natural lime sources has the highest percentage of extra fine particles (less than 0.125mm) which rapidly penetrate the subsoil layer.

Our blend of "fines" in the product ensure a fast result in improving the soil pH level necessary for the area and many farmers have seen significant improvement in reducing acidity in their paddocks in the season it is applied.

Many suppliers may quote high (>80%) Neutralizing Values of their lime which are misleading and don't give the true picture. It's important to consider and compare the Effective Neutralising Value (ENV) of lime sources - crushed limestone, lime sands, chalk lime and other products using the correct lime calculator.

Quoting Peter Newman, a leading agronomist and creator of the MyResearchAgro app:

*"When applying lime, what matters is how much ENV (Effective Neutralising Value) you are applying with emphasis on the key word, **Effective**" and "We know that lime must come in contact with acid for it to dissolve and raise the pH so the bigger the surface area of the lime, the better. Finer particles create a larger surface area and changes the pH faster".*



For orders and sales please contact 08 9776 1206 or 1800 803 003

For technical information contact Phil 0431 478 177 or Keith 0428 936 003



# FOOD SYSTEM Innovation Studio

## Part 1

Thursday 19th March

[CLICK HERE TO BOOK](#)

## Part 2

Monday 23rd March

[CLICK HERE TO BOOK](#)

153/143 Lockyer Ave, Centennial Park |

9.30am – 5.30pm

Over the last 5 years, Food for Thought's many smart and motivated people have shared their ideas and passions over forums, workshops, long table dinners, field days, community events and last year's Dialogue Studios.

With the focus for 2020 being "Courageous Leadership Enabling System Change" we're responding to a shared desire. The desire to turn ideas into actions. It's time to come together to create the change – and these two related Innovation Studios are where this will happen at this year's Food for Thought Festival.

The Innovation Studios will explore case studies leading the transition globally towards regenerative, healthy, democratic and vibrant food systems.

**Vermont Sustainable Jobs Fund. Farm to Plate Plan.** Jake Claro (USA)

**Commonland. For Tomorrow's Harvest.** Dieter van den Broek (NL)

**Sustain: The Australian Food Network. Cardinia Food Circles Project.** Nick Rose (AUS)

With West Australian stories to be explored over both days.

[WWW.FOODFORTHOUGHTFESTIVAL.COM](http://WWW.FOODFORTHOUGHTFESTIVAL.COM)



Department of  
Primary Industries and  
Regional Development



COMMONLAND  
A BETTER FROM LANDSCAPE RESTORANCE



SUSTAIN the Australian  
food network







# SLOW

## ITALIAN AUTUMN FEAST

# Food

SUNDAY 22ND MARCH

1PM - 4PM

198 LINK ROAD, ALBANY

\$130 PP

[CLICK HERE TO BOOK](#)

Join in the celebration of Autumn abundance from Amazing South Coast growers and producers and Slow Food Chef from the Swan Valley, Vince Velletri.

Enjoy an eleven course Italian degustation luncheon using produce from local growers and producers that align with the Slow Food principles of food that is Good, Clean and Fair. Courses will be paired with organically grown Oranje Tractor wine.

Meet the growers and the makers and other ambassadors of Slow Food in a rustic and relaxed alfresco setting. Amble through the potager garden, rambling vegetable, fruit and herb beds and the espalier orchard, all laden with produce.

[WWW.FOODFORTHOUGHTFESTIVAL.COM](http://WWW.FOODFORTHOUGHTFESTIVAL.COM)



Department of  
Primary Industries and  
Regional Development



COMMONLAND  
4 RETURNS FROM LANDSCAPE RESTORATION



SUSTAIN the Australian  
food network



Community  
FOOD EVENTS

Slow Food  
Swan Valley and Forests Region



Albany



# Make the most from your fertilizer investment



As your local Area Manager, Andrew Wallace is keen to assist you with all of your fertilizer decisions this season.

So whether it's soil testing, nutritional advice, fuel gauges, or simply an on-farm appointment to discuss your requirements, give Andrew a call today.

Mobile: 0427 083 820

Email: [awallace@summitfertz.com.au](mailto:awallace@summitfertz.com.au)



# AUSPAN

WA's LEADER IN THE DESIGN & CONSTRUCTION  
OF STEEL FRAME SHEDS AND BUILDINGS



# SHEDS

**CALL NOW**  
1300 271 220

- ▶ Workshops
- ▶ Hay sheds
- ▶ Council approval
- ▶ Multipurpose grain shed packages
- ▶ Concrete Floors / walls
- ▶ Kit Sheds

☎ 1300 271 220  
🌐 [www.auspangroup.com.au](http://www.auspangroup.com.au)



## Disabled Surfers Association Great Southern 2020 "Let's Go Surfing Days"



Supported by: national [disabledsurfers.org/](http://disabledsurfers.org/)  
Due the huge success of DSAGS 2019 season we will be having another 4 days in 2020.



### Surfers, Carers & Volunteers

Register 9am, water 9.30 am – 11.30/12 noon,  
presentations and free BBQ

**Saturdays – 9.30am**  
**Jan 11<sup>th</sup>, Feb 8<sup>th</sup>, March 7<sup>th</sup>, April 4<sup>th</sup>**

**Albany - Middleton Beach**

[www.facebook.com/DisabledSurfersGS/](http://www.facebook.com/DisabledSurfersGS/)

Register [www.eventbrite.com.au/e/lets-go-surfing-registration-85331856881](http://www.eventbrite.com.au/e/lets-go-surfing-registration-85331856881)

"Adult/child accessible changing facilities available"



# Gnowangerup Summer Fair 2020



Wow, what a day we had on Saturday!

Firstly, the Gnowangerup CRC would like to thank all of the volunteers, stall holders and food vans who attended this year. Another big thank you to the members of the community for attending the Summer Fair despite the weather.

As soon as I woke up on Saturday morning and heard the rain softly showering my roof, I thought, "Oh crap!". In my mind I thought our Summer Fair was ruined. The countless hours of preparation by the CRC staff and committee and our lovely volunteers, was all for nothing. Boy was I wrong! The rain continued to mist the sky for the rest of the day, but that wouldn't stop the residents of Gnowangerup from having a good time! Sideshow

Alley had setup their rides and games, the food vans/stalls were preparing deliciously warm food, Peter's planes were proudly displayed, and the emergency services had a lot of fun activities planned for the kids. The show must go on!

It was as if a miracle had happened. The rain actually looked like it was making more fun for the kids when the rides turned into slip and slides! Kids were seen running around in the rain, getting muddy and laughing until their cheeks hurt. The rain quickly went to the back of everyone's mind and for the whole day we continued on as normal. With lots to see and do there was something for everyone to enjoy.

- ◇ Sideshow Alley & Rides
- ◇ Old McDonald's Farm
- ◇ Davina's interactive art mural
- ◇ Mandy's melodic voice could be heard from anywhere on the oval
- ◇ Likewise, Gertrude could be seen from anywhere on the oval, sporting a fluorescent pink lace poncho
- ◇ Peregrine Engineering brought some planes to display. Hopefully next year they can take people for plane rides!
- ◇ The Gnowangerup District High School had a car wash using the Fire Truck's hose!
- ◇ The Police had some fun interactive activities. Anyone could get their fingerprints taken, try on the riot gear and sit in the Police car!
- ◇ Free entry to the Pool
- ◇ Competitions and stalls





At the end of the day we went home soaking wet, with smiles on our faces and new memories to cherish. In the years to come we will look back on that Saturday and laugh about the irony that was the Winter Summer Fair of 2020. We hope everyone who attended this year had an awesome time and we look forward to seeing everyone again next year!

The Summer Fair continues to improve year after year with the wisdom of the past. We hope to iron out all of our kinks from this year and deliver an even more enjoyable day for everyone next year. Please tell us your thoughts, suggestions and ideas.

The Gnowangerup CRC would like to thank the community for showing their support and attending this year despite the weather. We would also like to thank all of the volunteers that made this event possible:

- Gav
- George & Annette
- Janean
- Jill Lesk
- Lex from SES
- Lola
- Mandy Harris
- Michele Stone
- Mona Smith
- Nancy Winter
- Thelma



Thank you to our sponsors:



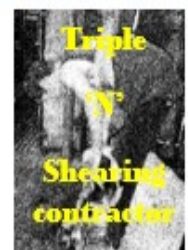
Gertrude Wellease



BALDJAMAAR  
FOUNDATION



SHIRE OF GNOWANGERUP



Mentally  
Healthy WA





# **GNOWANGERUP HUB COMMUNITY GARDEN**

**Do you have an interest in gardening?  
Do you have knowledge you would like to  
share?  
Do you need a veggie garden to grow your  
own?  
Do you just like to garden?**

**Then we are interested in seeing you at the  
Gnowangerup Hub Community Garden**

**We would love to see all keen gardeners, young or  
old.**

**Located behind the CRC, entrance from  
Whitehead Road  
Meeting room is the old Pavilion building at the  
back of the Baptist Church hall.**

**From the 7th of March the Garden will be  
open on the  
1st and 3rd Saturday of the month. 8.30  
am till 10.30 am.**

**Come along and find out what we are all about.  
For further information and membership forms  
please contact the Gnowangerup CRC**



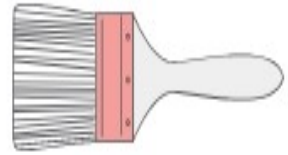
## GNP CRC Upcoming Events



YOU ARE INVITED TO OUR



# Crafted Yarn



FROM 10AM - 1ST AND 3RD FRIDAY OF THE MONTH - AT THE GNOWANGERUP  
CRC

Come and join our Craft and yarn days  
Bring along your craft projects and we will supply the coffee!



## GRAND OPENING

St John WA Gnowangerup Sub Centre would like to invite the  
Gnowangerup Borden and Ongerup Communities  
to the official opening of our new building

**At the Gnowangerup Sub Centre**

20 Corbett Street, Gnowangerup WA 6335  
On Saturday 21st March 2020 at 2pm

Followed by a light afternoon tea



**St John**

Please RSVP by Monday 16th March 2020 to [gnowangerup@stjohnwa.com.au](mailto:gnowangerup@stjohnwa.com.au) or 0457 970326

St John



# MACHINERY HIRE - STUMP REMOVAL - RAKING

**RAPTOR**  
GROUP



CAT D6 With Rake



40T Excavator



Stump Plucker



Land Clearing Rake



CAT Challenger

ENQUIRE ONLINE NOW AT [WWW.RAPTORGROUP.COM.AU](http://WWW.RAPTORGROUP.COM.AU) OR CALL 9847 4747 TO DISCUSS YOUR REQUIREMENTS

## DAVIS

BULLDOZING & EARTHMOVING



- ◊ Dams
- ◊ Enlargements
- ◊ Gravel Stockpiling
- ◊ Flat Catchments
- ◊ Rock & Stump Removal
- ◊ Excavator

Contact John: **0428 271 144**

PH: 9827 1144

FAX: 9827 1344

PO Box 257 Gnowangerup WA 6335

Email: [johndavisbulldozing@gmail.com](mailto: johndavisbulldozing@gmail.com)

## B.P HARRIS & SON

"You Name It, We Make It—You Break It, We Fix It"



54 Quinn Street, Gnowangerup WA 6335

(08) 9827 1076

[www.bpharrisandson.com.au](http://www.bpharrisandson.com.au)



- WELDING
- FABRICATION
- PULLEYS
- ENGINEERING
- BEARINGS
- STEEL SUPPLIES



## Media Release – Australia Day 2020

This year's Australia Day celebrations took place at the Gnowangerup Sporting Complex. It was a great day for all with an approximate attendance of 100 people. The Gnowangerup Police and Shire President assisted local community members to raise the flags and, as usual, Pleun and Phil provided fantastic music.

This year we also had a Citizenship Ceremony to welcome some new Australians into our community. Congratulations to Nestor and Sebastian Negrito on receiving their Australian Citizenship.



This year's winners of the Australian Citizen of the Year Awards were:

- John and Gail Vaux (Community Citizens of the Year)** - Having lived in the Ongerup community for over 50 years John and Gail have provided a lifetime of support and enthusiasm to many clubs and groups within this time. They have both been vital members of school, social, sporting and service clubs in the Ongerup area and throughout the Gnowangerup Shire. They are a great community double act and being long-time residents in Ongerup and bringing up their three children they have been involved in many groups along the way and given their wisdom and historic stories to newcomers and visitors.
- Aaliyah Woods (Community Citizen of the Year, Youth)** - In 2019, Aaliyah was awarded a traineeship at the Shire of Gnowangerup to complete a Cert II in Business. With only 6 months left of school, she had to complete her traineeship in a very short time. Aaliyah worked exceptionally hard to get this completed in time, juggling her schoolwork and units every week to ensure they were completed in time. At the Gnowangerup District High School Aaliyah was head girl in 2017 and a student councillor for many years. In 2018, she worked with the School on a structured workplace-learning program supporting the Physical Education program.
- Tractoberfest Committee (Active Citizenship, Group or Event)** - To celebrate and announce the amazing BIG TRACTOR project that will be commencing in our community very soon, a small group of volunteers held a TractoberFest event, which was held on 12th October at the Gnowangerup Sporting Complex. The night consisted of wine, beer and cider tastings along with live entertainment from Lake Grace's Bale Out and Darren Reid and the Soul City Groove. The committee raised over \$11,000.00 in sponsorships before the event, these from both local and regional businesses. All profits for this event will go towards the "world's biggest tractor". A project that will help this small community get on the map and promote the entire region.



All of these awards are very well deserved, Congratulations to each of these community members/group for your amazing contributions to our community. We would also like to thank everyone who took the time to come and celebrate this special day and enjoy a lovely breakfast with your fellow community members.

Bob Jarvis  
Chief Executive Officer







## AUSkey and Mygov access to the ATO is being phased out by the 27th March 2020.

Come along to this free workshop at the Gnowangerup CRC to get more info on MyGovID and RAM; facilitated by Senior Chartered Accountant, Marie Van Blommestein from RSM Katanning.

**THURSDAY 12TH MARCH 2020**

**2pm—4pm**

**Afternoon tea provided**

Please RSVP by the 10th of March for catering purposes.

08 9827 1635 or roundup@gnowangerupcrc.com.au



**Are you  
interested in  
singing, dancing  
or playing an  
instrument?**



*\* The Gnowangerup CRC  
is starting a  
Singing/Music Group!*

Contact the Gnowangerup CRC's Manager, Tracey Clark  
Ph: 9827 1635  
Email: manager@gnowangerupcrc.com.au

**If anyone has any old musical  
instruments they wish to  
donate, please contact the  
Gnowangerup CRC  
Thank You!**



### **21T Excavator with operator.**

- Prices starting from \$100/hour
- Dam Cleaning / Fixing
- Rock heap removals
- Tree removals
- Trenches, holes and more.

Available from 15 September 2019. Book now to get your spot during summer.

**Call Gary Jansen 0438 289 000**



# TRANSPORT



# SPREADING

- LIME & GYPSUM SPREADING
- SNAIL & MOUSE BAITING
- BULK HAULAGE & OVERSIZE
- 3M CENTRES
- VRT COMPATABLE
- 10-12M CTF

For a **compatible quote** or package deals, please call **John** on **0418 696 590**  
or email **christiane@sclaustralia.com.au**



[www.sclaustralia.com.au](http://www.sclaustralia.com.au)



## We want you on our team!

The Gnowangerup CRC is  
looking for more  
Committee Members!



**TO JOIN OUR CRC  
TEAM OR IF YOU HAVE  
ANY QUESTIONS PLEASE  
CONTACT TRACEY:**

Ph: 9827 1635  
Email: [manager@gnowangerupcrc.com.au](mailto:manager@gnowangerupcrc.com.au)



**WOULD YOU LIKE TO PROMOTE  
YOUR BUSINESS FOR FREE?  
HAVE AN INTERESTING STORY  
TO TELL? PLANNING AN EVENT?**

## Schedule an interview for the "In the Gnow"!

Contact Sophie at the Gnowangerup CRC today  
ph: 9827 1635  
email: [admin@gnowangerupcrc.com.au](mailto:admin@gnowangerupcrc.com.au)  
or stop by for a chat at the CRC!





# WA Accredited Pilot—Heavy Vehicle Pilots Training

**20—21 March 2020**

**Gnowangerup CRC—Yougenup Centre**

**\$1100 per person**

This training course will give you the knowledge and experience required to Pilot/Escort an oversized or over massed load, communicate with other pilots/escorts, road users and authorities. You will also learn to control traffic as a Pilot and coordinate emergencies and breakdowns.

The course is designed to span over 2 days featuring both classroom learning as well as practical challenges to test your skills and knowledge learned in the course. You will be trained and tested with real-life scenarios and real oversized/over massed loads.

## **Prerequisites**

- You must hold a full “C” class driver’s license in Western Australia
- Be physically fit

## **Course Completion**

Once a student has successfully completed the course, they will be awarded a Statement of Attainment for the following units of competency: -

- TLIC3010A – Pilot or Escort oversized and/or over massed loads
  - TLIE3009A – Use Pilot and Escort Communication
  - TLIF3060A – Control Traffic as Pilot Vehicle Operator
  - TLIF3013A – Coordinate breakdowns and emergencies

In addition to receiving your Nationally Recognised Statement of Attainment you will also receive an Accredited Pilot license for Western Australia through Main Roads.

For more information or queries regarding training please call Chris Nalder 0414 703 205

## Business Directory

### LANDMARK Stirling Ag

28-32 Whitehead Road  
Gnowangerup, WA, 6335

Phone: (08) 9827 1355

Fax: (08) 9827 1405

#### Principals:

Zach Walsh - 0447 109 848

#### Sales:

Tom McInerney - 0429 876 016

#### Sales & Accounts:

Jack Scanlan - 0408 277 959

#### Agronomist:

Sheridan Kowald - 0455 581 729

Tom McInerney - 0429 876 016

Kim Adams - 0447 830 948

#### Livestock & Real Estate:

Mike Moore - 0429 099 179

#### Finance:

Alysha Turner - 0437 501 520

## COFFEE WITH AN ARCHITECT

Accredited Architectural Design for Regional Western Australia

[www.regionalarchitect.com.au](http://www.regionalarchitect.com.au)

CALL US FOR A CHAT 9699 6474

**ORA**  
Office of Regional  
Architecture

New Houses, Adds & Alts  
Retail, Cafe, Office  
Heritage  
Community  
Planning Applications

**ABWA #2150**

### Country Ag AgChem Solutions for WA Farmers

Country Ag, Ag Chemical Specialist are pleased to welcome Jacqui Wood to their agency group.

**JACQUI WOOD**  
YOUR PARTNER IN CROP PROTECTION NEEDS

Country Ag's comprehensive range of products are manufactured in Western Australia and are now available from Jacqui Wood's Agency.

**WE ARE HERE TO SUPPORT YOU, THE LOCAL FARMER**

- ☒ High loading active ingredients
- ☒ Reduced packaging
- ☒ Better pricing and terms
- ☒ Innovation through Research & Development with a Certified Chemical Laboratory
- ☒ Western Australian owned with a community focus



Contact us for more information: 0427428033 or [jacqui.wood@bigpond.com](mailto:jacqui.wood@bigpond.com)

#### New Range

**PARA-TROOPER**

**JETTI DUO**

**Bolta**

**DIABLO DUO**

CALL TODAY FOR A QUOTE

## Improve Your Productivity

Reliable Lubrication Equipment

Minimum downtime • Maximum worktime

1300 767 705

17 Formby Street GNOWANGERUP  
E: [sales@armadillogroup.com.au](mailto:sales@armadillogroup.com.au)

[armadillogroup.com.au](http://armadillogroup.com.au)

**ARMADILLO Group**

## Eye Testing

Optometrist Matt Rebeiro

the **spectaclehut**

Need Glasses or Contact Lenses?

Want Quality AND Value for Money?

\*Eye Tests Bulk Billed To Medicare\*

Diabetic Screening Available

Buy One Pair Get One Pair Free\*

Huge Range Of Frames Available

\*Free standard single vision pair with full price pair

WA Owned

Mobile Clinic For All  
Your Eye Care Needs!

Book Early To Avoid  
Disappointment!

Eye Testing Clinic at  
Gnowangerup CRC

The same service you get at an  
optometrist in the city, brought  
to you

For Appointments:

Sherika: 0457617153

The testing equipment used is tested by the Australian Government Department of Health and Communities for accuracy.

## Nomad Industries Towing and Tilt Tray Services



**Beven Jaensch**

Licensed RAC Contractor

24 Hour Service, 7 Days a Week

Mobile- 0427271141

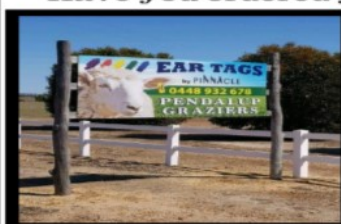
Office- 98271270

[nomad57@m2data.com.au](mailto:nomad57@m2data.com.au)

### PINNACLE PRODUCTS

PH: (08) 9827 3516  
Mob: 0448 932 678  
[sales@pinnacleproducts.net.au](mailto:sales@pinnacleproducts.net.au)  
[www.pinnacleproducts.net.au](http://www.pinnacleproducts.net.au)

Have you ordered your EAR TAGS yet?



Very quick turnaround! (Often same day)

Your local supplier of quality printed sheep tags

Based & printed in Gnowangerup

## Palm & Tree Lopping Service



Tree lopping & pruning  
No job too small



**Neatcare**

0409 782 628



## Business Directory

### GNOWANGERUP IGA



#### OPENING HOURS:

Monday-Friday: 8:00am - 6:00pm

Saturday: 8:30am - 12 noon

Phone: 9827 1109 Fax: 9827 1428

*Supporting Your Local Community*

**IF WE HAVEN'T GOT IT, WE CAN GET IT FOR YOU!**

### BARFEEDS STOCK PELLETS



Located 12kms west of Gnowangerup on  
main Broomehill- Gnowangerup Rd

Lick Feeder pellets as well as 9mm pellets  
suitable for trail feeding

#### Complete Nutritional Balance

Suitable for stud rams, feedlot sheep and lambing ewes

#### Orders and Enquiries

Terry: 0488 258 134

Richard House: 0428 271 565

Office: 9827 1565 E-mail: barloostud@bigpond.com



#### Mulesing Contractor

Book in early

Gnowangerup & Surrounds

Toby - 0455 600 070

*"For New Residential and Commercial Construction,  
extensions and renovations"*

### RM SMITH & SONS, THE RURAL BUILDERS

Randall Smith

Builders Reg. #13705

Mobile: 0403 332 220

PO Box 140, GNOWANGERUP, WA, 6335

P: 0403 332 220

E: r.smith@rmsmithandsons.com.au

*Whether you need a new home, a new roof or even a new bathroom, We are  
able to build your dream*

### M&K Hobbs Earthmoving



Roaded Catchments, Contours, Driveways,  
Firebreaks, Roadworks, General Grading

Contact  
**Murray Hobbs**

**0427 916 466**

Locally owned and operated

### GNOWANGERUP

# FUEL

SUPPLIES



8:30am to 5:00pm Monday to Friday

Office: 9827 1124 | Ron: 0428 285 012 | Fax: 9827 1066

Cnr Corbett and Cecil St, Gnowangerup

[gnpfuelsupplies@westnet.com.au](mailto:gnpfuelsupplies@westnet.com.au)

24/7 Fuel - OPT on Quinn St - EFTPOS, Shell, Motorpass

Bulk Fuel delivered

Mobil Oils

Exide Batteries

fuel pumps, meters, handpieces

AdBlue and equipment

grease and grease guns

### Anglican Community Church of Gnowangerup Vintage & Pre-Loved Op Shop

Anglican Community Church Hall  
**Open Thursdays**

**Open Tuesday & Thursday**

*Clothing, Jewellery, Hats, Shoes,  
Homewares & Furniture*

ALL DONATIONS WARMLY RECEIVED AND ALL PROCEEDS GO INTO THE COMMUNITY

Jan: 0427 710 376

Jill: 0427 770 767



## WESTCOAST

WOOL & LIVESTOCK

Proudly WA Owned & Operated

### Take the Westcoast advantage

- Wool buying
- Auction sale
- On-farm oddments
- Prompt payment
- Experienced in livestock services

**Reuben Small**

[reuben@wcw.com.au](mailto:reuben@wcw.com.au)

**0429 441 022**

**Danny Burkett**

[d.burkett@wcw.com.au](mailto:d.burkett@wcw.com.au)

**0418 848 314**

## NATIONAL RIDE2SCHOOL DAY WORDFIND

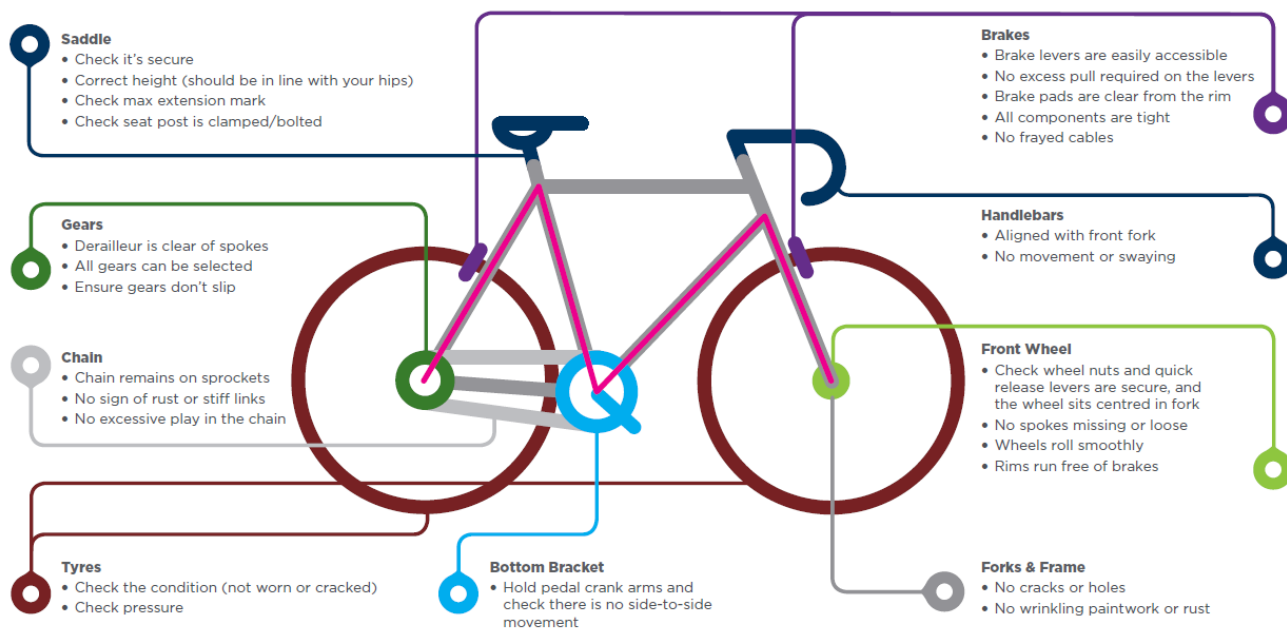


ACTIVE      ENJOYMENT      LAUGH      RIDING      TRAVEL  
ADVENTURE      FREAKY      MOVEMENT      SCHOOL      WALKING  
BIKE      FRIENDS      NATURE      SPOOKY      WHEELS



[ride2school.com.au](http://ride2school.com.au)

## BIKE SAFETY THE 'M' CHECK



**REGULAR 'ABCD' CHECK THAT SHOULD BE DONE BEFORE EVERY RIDE**

A = Air (Inflated tyres?)  
B = Brakes (front & rear ok?)  
C = Chain (seizing, slipping or rusting?)  
D = Drop (Is there anything loose, all sound ok?)



Name \_\_\_\_\_ Age \_\_\_\_\_



# Mar 2020

Sun	Mon	Tue	Wed	Thu	Fri	Sat
1	2	3	4	5	6	7
8	9	10 Opshop 10am— 12pm	11 Parenting workshop 10:30am Gnowangerup Family Hub 3:00pm	12 Opshop 10—12pm MYGov 2pm-4pm	13 Crafted yarns National Ride 2 school day	14
15	16	17 Opshop 10—12pm	18 Gnowangerup Family Hub 3:00pm	19 Opshop 10—12pm	20	21
22	23	24 Opshop 10—12pm	25 Gnowangerup Family Hub 3:00pm	26 Opshop 10—12pm	27 Crafted yarns	28
29	30	31 Opshop 10—12pm				

## Upcoming events 2020

- Stress management, relaxation and mindful parenting—11/03/2020
- Crafted Yarns